

## INSTALLATION FOR SINGLE HANDLE DECK MOUNTED WIDESPREAD FAUCET (xx-1.3)



### Note:

- Use Teflon tape or pipe sealant for threaded connections.
- Do not use plumber's putty, chemical cleaners or any product with ammonia on any of the brass components. This will cause the finish to tarnish and void the warranty. A non-corrosive 100% silicone is recommended.

1. Carefully remove all parts from the box. These units should contain the following parts:
  - SPOUT (1) WITH "T" ASSEMBLY (2) & PLUG (25)
  - SINGLE CONTROL VALVE (3) COMPLETE WITH HANDLE TRIM (4, 5) & THREE FLEXIBLE HOSES (7)
  - POP-UP ROD (8) AND KNOB (9) (Where applicable)
  - POP-UP DRAIN ASSEMBLY

**Note:** Some handles do not have top handle lock nuts.

2. Begin by first installing the Spout.
  - Remove the "T" Assembly (2) from the Spout (1).
  - Drop the Spout through the hole in your countertop or sink.  
Tighten the Lock Nut against the underside of mounting surface.

**Note:** For Models with offset Lift Rods, be sure there is a clear path for the Lift Rod when you install the Washer beneath the sink. The Washer is notched for this purpose.

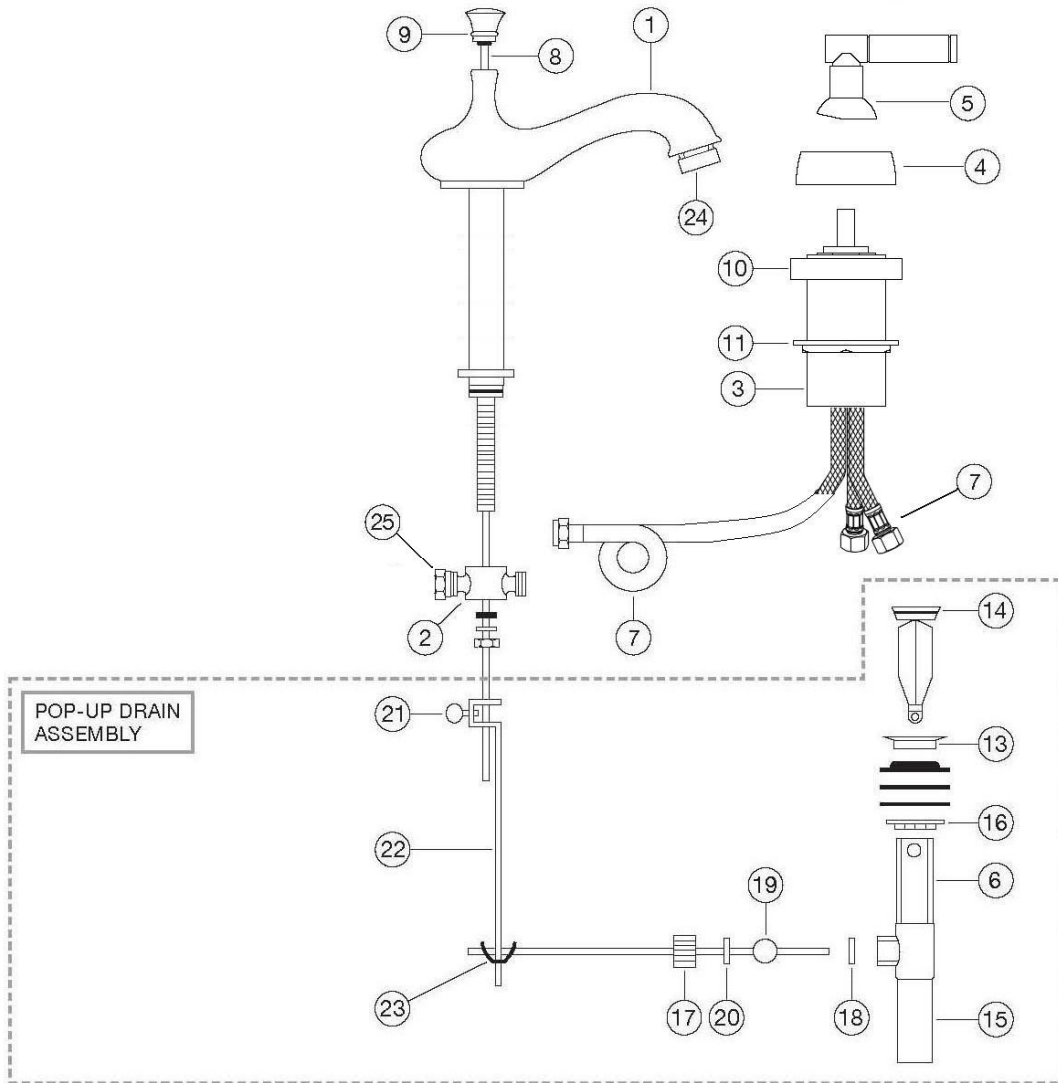
  - Re-assemble "T" Assembly onto bottom of Spout, One end of "T" is plugged using PLUG (25)
3. Identify your Single Control Valve.
  - Remove Bottom Lock Nut (11); DO NOT Remove Handle trim from Valve Assembly.
  - Drop the Valve & Handle Assembly through the hole in your countertop or sink.
  - Begin to tighten the Valve to your countertop or sink or spout base plate with a Bottom Lock Nut. Tighten the Lock Nut against the underside of mounting surface.
  - Check Escutcheon (4) and Handle (5) on valve body. Be sure that handle properly clears of the Escutcheon, and swivels freely. Adjust if required.
4. Connect the one Flex Hose (7) to "T" Assembly and two Flex Hoses to the HOT and COLD water supply respectively. These hoses can be bent or twisted, but be careful not to kink the hoses or you will have limited water supply and excessive noise from the faucet.
5. Begin by bleeding the water lines before connecting to the valves. Connect water supplies to bottom of valve

6. Install the Pop-Up Drain (Units without LIFT KNOB will have either GRID Drains or Soft Touch Pop Up Drains)
  - Remove Collar (13), Plug (14), and Tail Piece (15) from the Pop-Up Body (6).
  - Lower Nut (16) to the lowest possible thread.
  - Push Pop-Up Body, including Washers up through the sink drain.
  - Screw Collar (13) to the Pop-Up Assembly. You may want to use sealant under the Collar. Use only a non-corrosive 100% Silicone. The use of any other sealant will cause your warranty to be voided.
  - Hand tight the Bottom Nut (16). Do not over-tighten or you may crack your sink.
  - Re-attach the Tail Piece. This piece may have to be cut down depending on the height of your drain.
  - Unscrew Side Nut (17) from Pop-Up Assembly.
  - Place Ball Washer (18) inside hole.
  - Place Pop-Up Plug (14) into the sink, down through Pop-Up Collar (13).
  - Now, install Ball Rod (19) into Pop-Up Body.
  - Place second Ball Washer (20) on the Rod (19).
  - Hand tight Side Nut (17) securely.
  - Put Lift Rod (8) through Spout (1).
  - Use Thumb Nut (21) to secure Rod Extension (22) onto end of Lift Rod (8).
  - Pull Ball Rod (19) towards the floor until it stops. Do not force.
  - Slip Ball Rod through nearest hole in Lift Rod Extension (22). Lift Rod Extension may be bent to accomplish this.
  - Secure the Ball Rod and Lift Rod Extension with Clip (23) as shown in diagram.
7. Remove aerator (24) and flush faucet by running both Hot and Cold water in full open position. Replace the aerator.
8. Check for leaks. If leaks or problems occur, re-tighten all nuts before consulting a plumber.

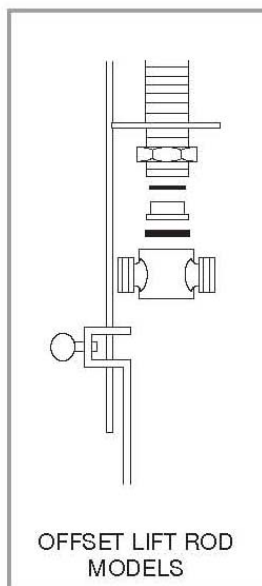
FOR TECHNICAL SUPPORT PLEASE CALL 718-257-2800

REV. 9/08

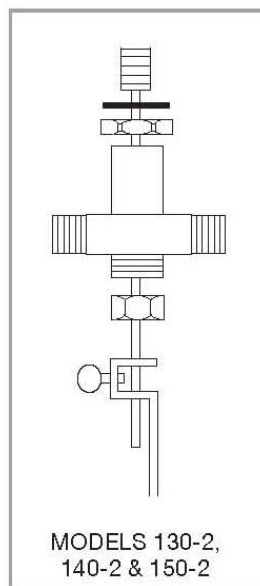
# INSTALLATION DIAGRAM



POP-UP DRAIN ASSEMBLY



OFFSET LIFT ROD MODELS



MODELS 130-2, 140-2 & 150-2